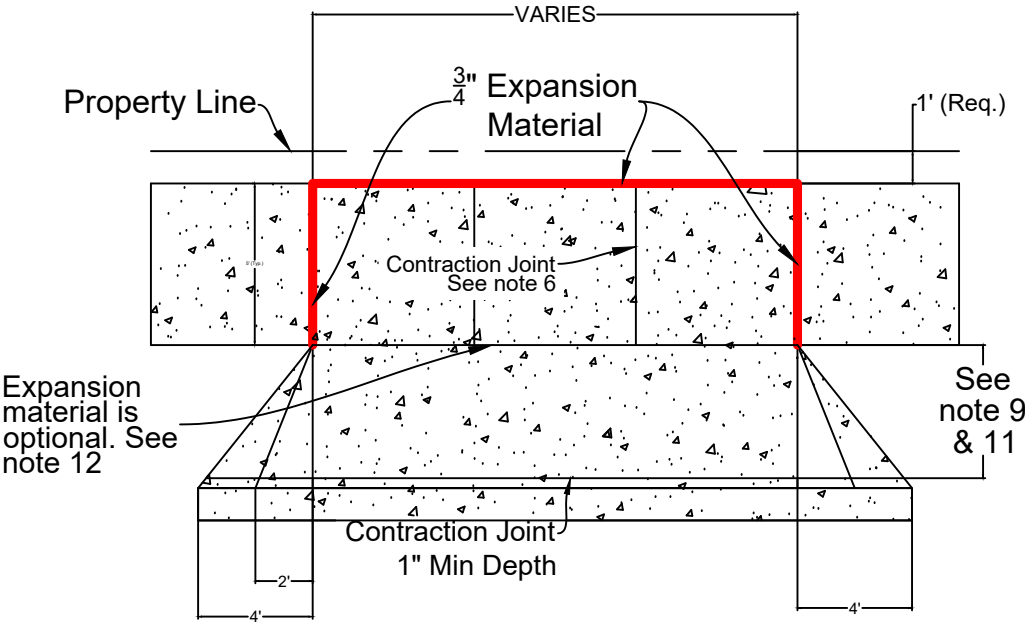




**Notes:**

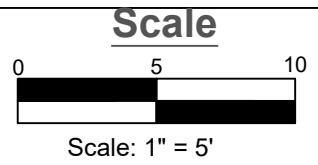
- 1) Expansion joint spacing shall be at 50' intervals, and when abutting existing concrete. Unless specified/approved by the engineer, and shall be sealed in accordance 501.3.
- 2) Concrete for driveways and sidewalks shall meet compressive strength requirements of 3500 P.S.I. along with rebar requirements.
- 3) Concrete for driveways and sidewalks abutting driveways shall be 6" thick, all other sidewalks shall be 4" thick.
- 4) Driveway apron widths:
  - Residential: 36' maximum or 10' minimum Or up to 50% of frontage whichever is less  
Driveway aprons to have flares to match curb elevations. Standard flares will require 4' of additional curb cut.
  - Commercial: 40' maximum  
Driveway aprons to have flares to match curb elevation. Standard flares will require 4' of additional curb cut.  
If no sidewalk, driveway apron flare measured 8.5' from back of curb
- 5) Where necessary to remove existing curb and gutter it shall be removed to an existing joint.
- 6) Contraction joint spacing shall be at 5' intervals and be at a minimum  $\frac{1}{4}$  depth of pour. (example, 4 inch concrete = 1 in depth or 6 inch concrete = 1.5 in depth)
- 7) When constructing a new driveway apron or altering an existing apron, full height curb cannot remain in place, unless the curb is cut to fit the in accordance to other specs. Curb and gutter may remain in place during driveway apron construction if it is an existing depressed curb and gutter section.
- 9) Sidewalk cross slope must drain toward street. 1.5% target, 2.0% max. And  $\frac{1}{4}$ " per foot from the front side of the sidewalk to backside of curb
- 10) All sidewalk and/or driveway aprons to have 4" of approved base material, including but not limited too washed sand, crushed concrete, class 5 or aggregate gradation found in the standard specs.
- 11) On all aprons over 36', contractors may fill in the flare with concrete to make it a straight flare. This will enable an additional 4' on each side of the apron. Where the straight flare meets the existing sidewalk, the sidewalk must be 6" thick
- 12) The expansion material between the 6" sidewalk and the driveway apron is now optional. If the contractor pours the sidewalk and apron on separate days/separate pours then form work with expansion and/or a keyway will be required. Without the expansion material there is a required saw cut of  $\frac{1}{4}$  the depth of pour



Note: 4" Washed Sand, Crushed Concrete, or NDDOT Class 5 Base needed under Concrete.

Refer to the Mandan Construction Specifications for the complete set of specifications on all details.

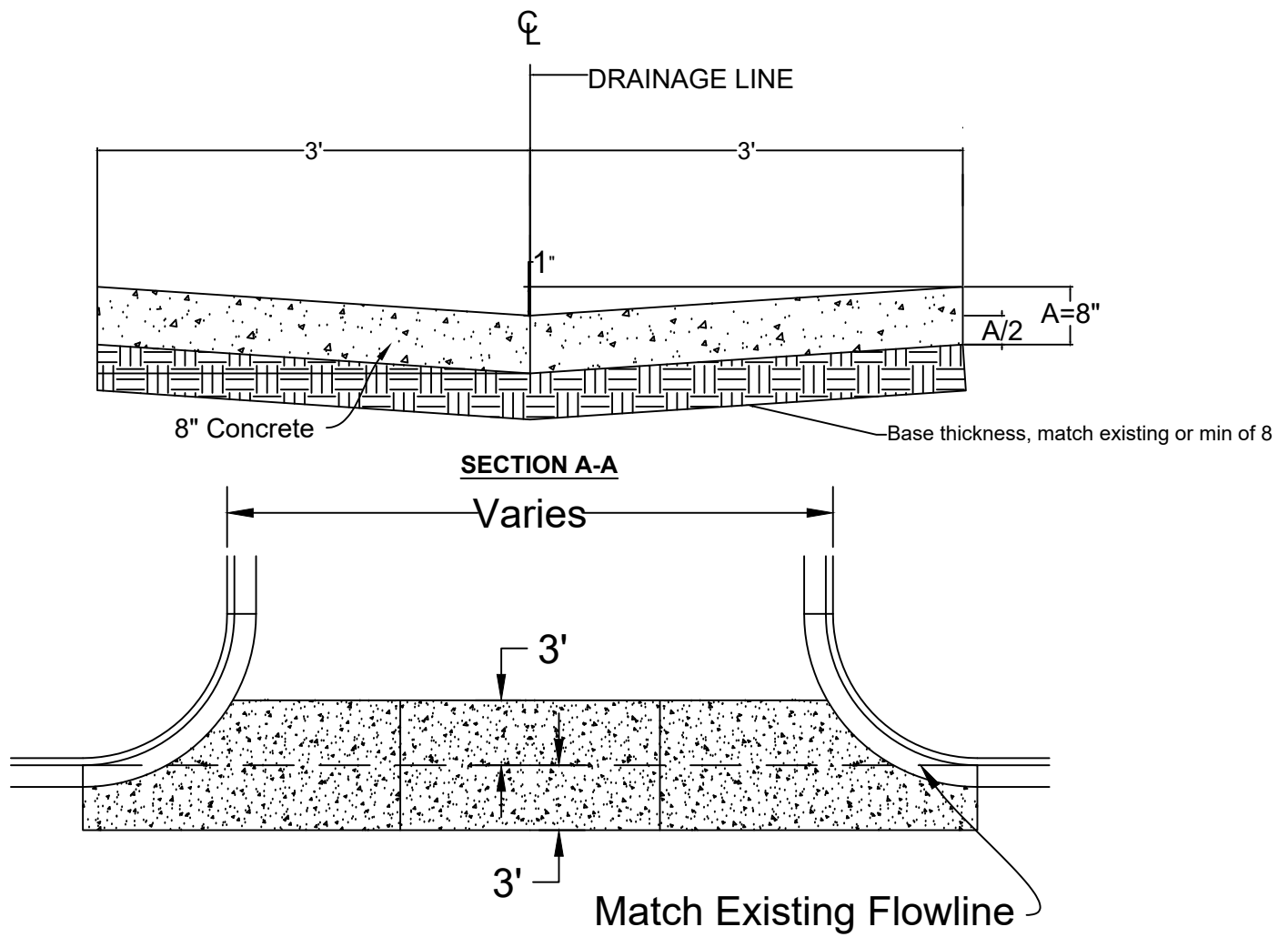
Scale	Sheet #
1" = 5'	1 of 1
Date	
10/2/2014	
File Name	
Standard Sidewalk Detail.dwg	



**1304-A SIDEWALK & DRIVEWAY DETAIL**

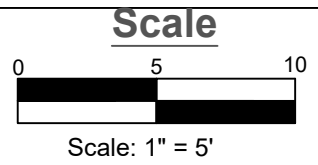


City of Mandan



Note: Remove adequate asphalt with saw cut to ensure smooth transition.

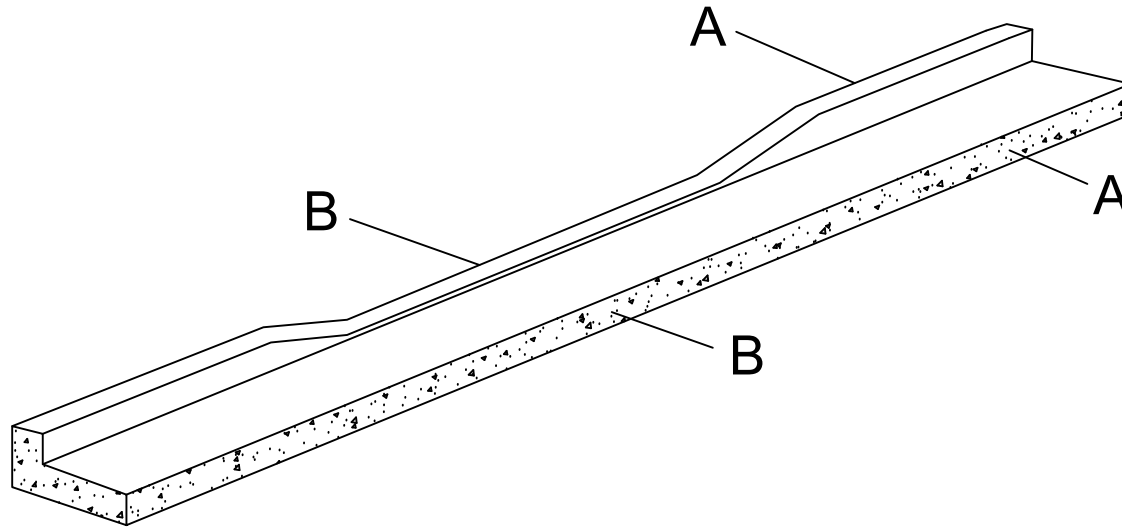
Scale	Sheet #
1" = 5'	1 of 1
Date	
10/2/2014	
File Name	
Standard Sidewalk Detail.dwg	



1304-B TYPICAL CURB  
& GUTTER DETAIL

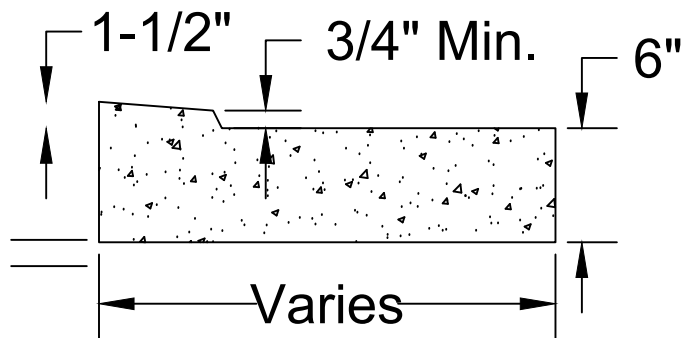


City of Mandan



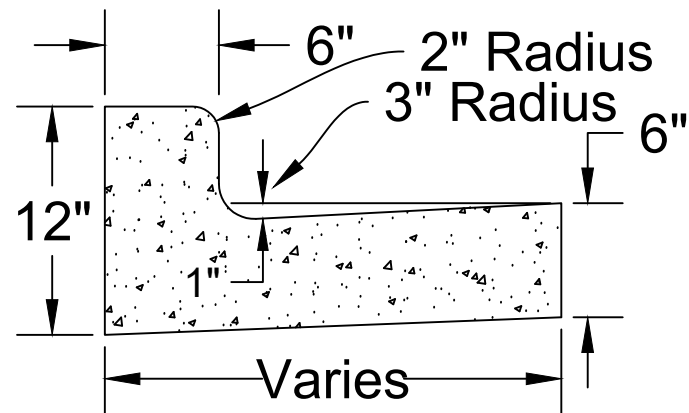
## Section B - B

Depressed Curb

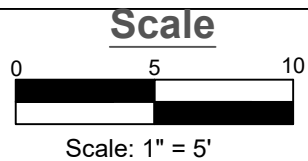


## Section A - A

Full Curb



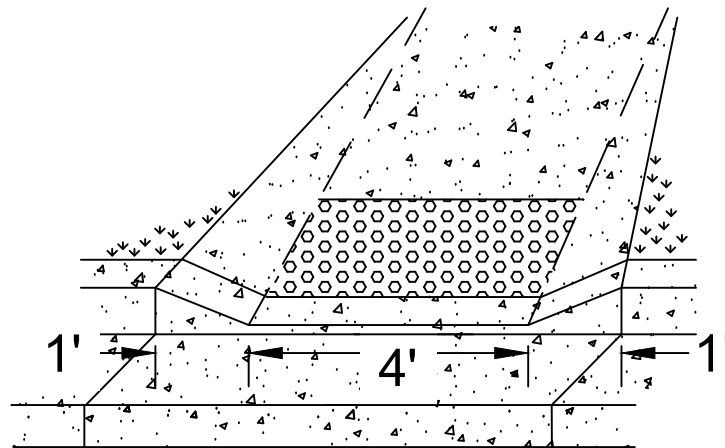
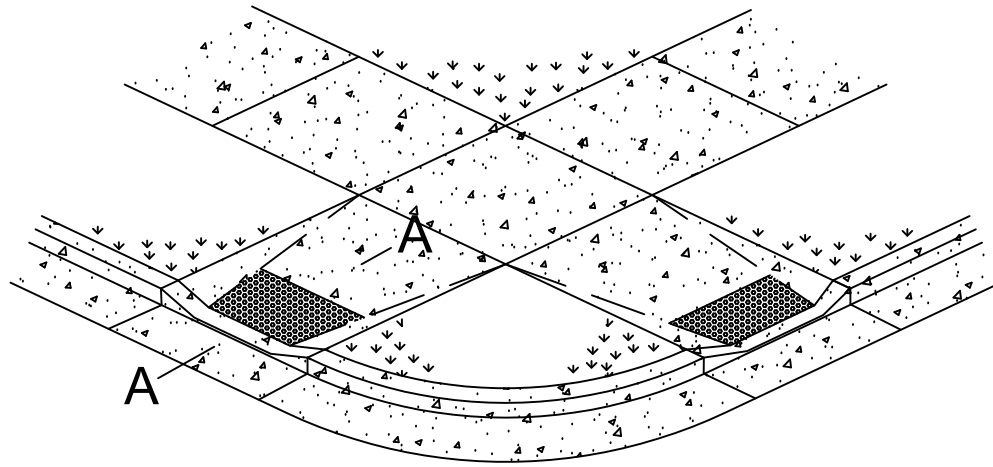
Scale	Sheet #
1" = 5'	1 of 1
Date	
10/2/2014	
File Name	
Standard Sidewalk Detail.dwg	



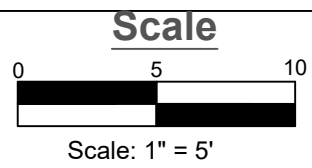
1304-B TYPICAL CURB  
& GUTTER DETAIL



City of Mandan



Scale	Sheet #
1" = 5'	1 of 1
Date	
10/2/2014	
File Name	
Standard Sidewalk Detail.dwg	

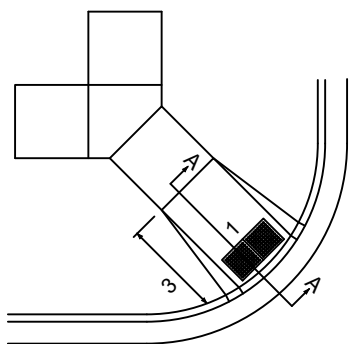
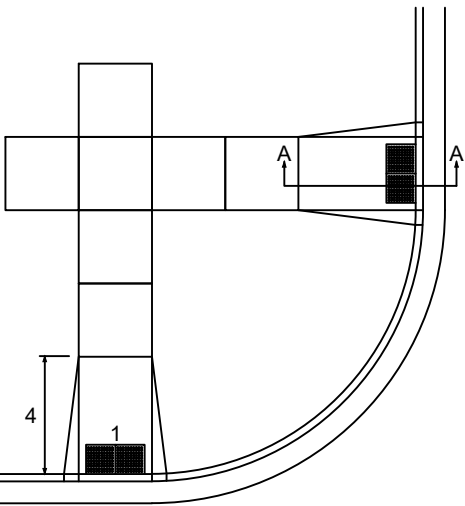


1304-C ADA RAMP  
DETAIL

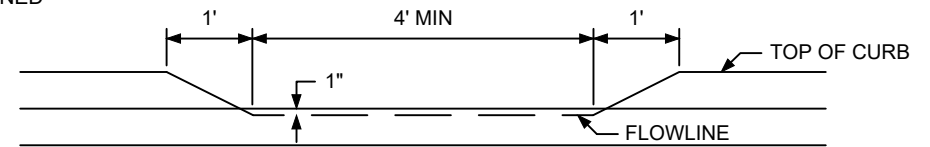


City of Mandan

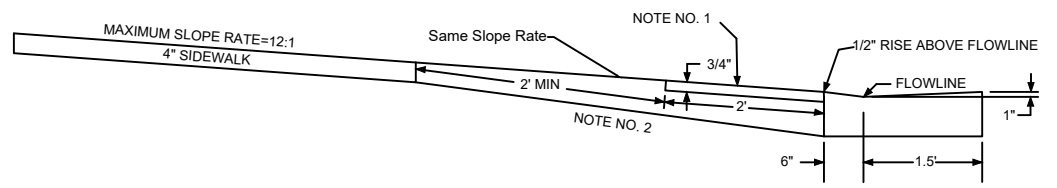
- NOTE NO. 1 2'X2' DETECTABLE WARNING PANEL
- NOTE NO. 2 BOTTOM OF LANDING SHALL BE 6" THICK TAPERED TO 4" THICK MIN. 4' UP THE LANDING
- NOTE NO. 3 LENGTH OF RAMP SHALL BE DETERMINED BY THE ENGINEER



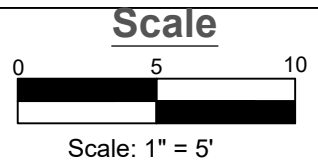
**FLARED SIDES OF CURB RAMP**



**SECTION A-A**



Scale	Sheet #
1" = 5'	1 of 1
Date	
10/2/2014	
File Name	
Standard Sidewalk Detail.dwg	



**1304 C-1 ADA RAMP  
DETAIL**



City of Mandan