



Future of the Mandan Fire Department



<https://www.facebook.com/mandanfire>



[@mandanfire](https://www.instagram.com/mandanfire)



<https://www.cityofmandan.com/fire>

The Foundation of Our Service to Mandan

Our Mission

To serve the community by preserving life, protecting property and the environment through prevention, education, emergency medical services, rescue, and fire suppression.

Our Vision

To deliver efficient and effective services by working together to maintain a progressive, caring, professional organization that remains flexible within a changing environment. We strive for recognition of our leadership within the region and the state by fostering cooperative working relationships.

Our Values

We value respect, integrity, accountability, teamwork, service, and adaptability. We measure our success by the satisfaction of the community that we serve, our personnel, and our emergency response partners.





Our Growing Community

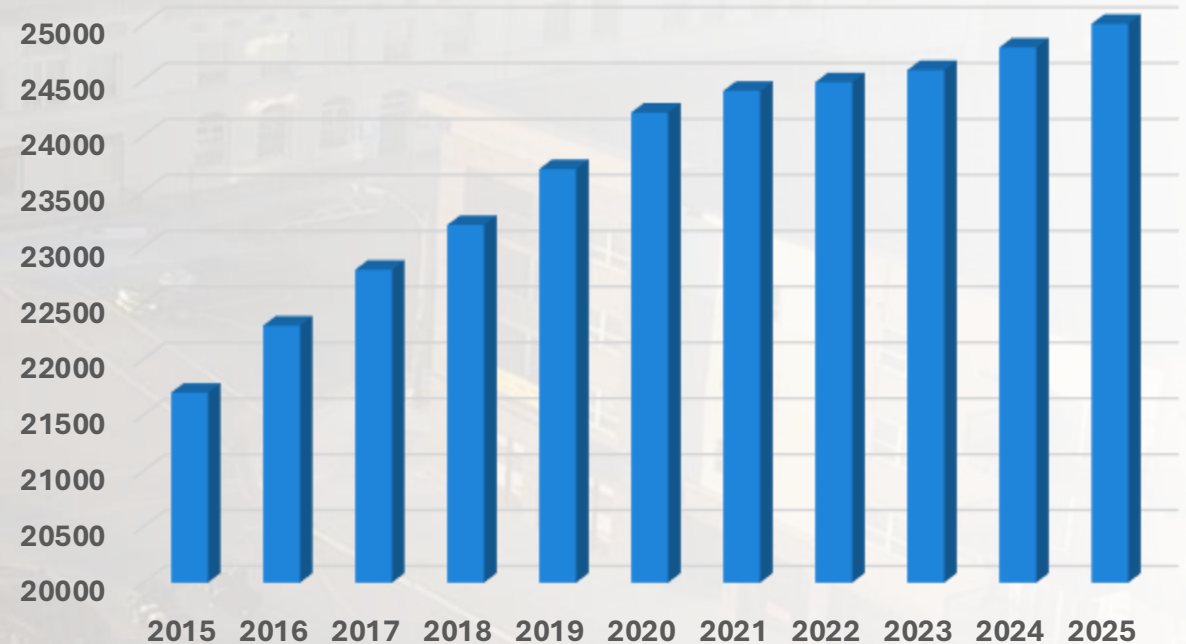
Today

- Population: 25,000
- Square miles: 13.6

2050

- Population: 36,000
- Square miles: 25
- Additional 5000 dwelling units

10 Year Population Growth





Increasing Call Volume

- 62% increase in call volume in the last 10 years
- 20% of calls are overlapping

10 Year Call Volume



Fire Station Locations Today



Fire Station 1
110 Collins Avenue

Remodeled in 2002. Houses fire administration, 1 fully staffed fire engine, 1 ladder truck, 1 reserve fire engine, & 1 brush truck.



Fire Station 2
2009 40th Avenue SE

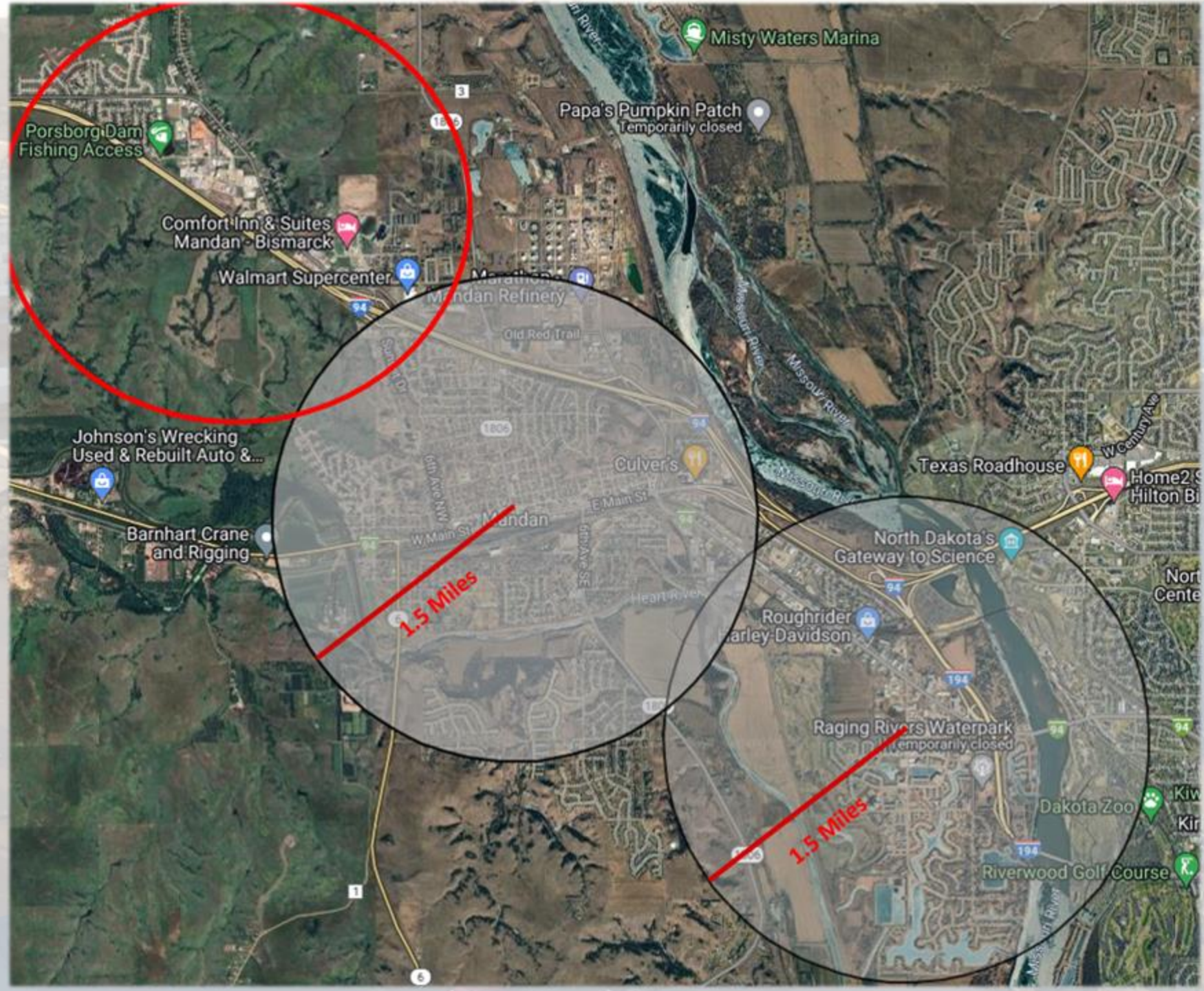
Built in 2009. Houses 1 fully staffed fire engine & 1 rescue boat.

Fire Station Coverage Today

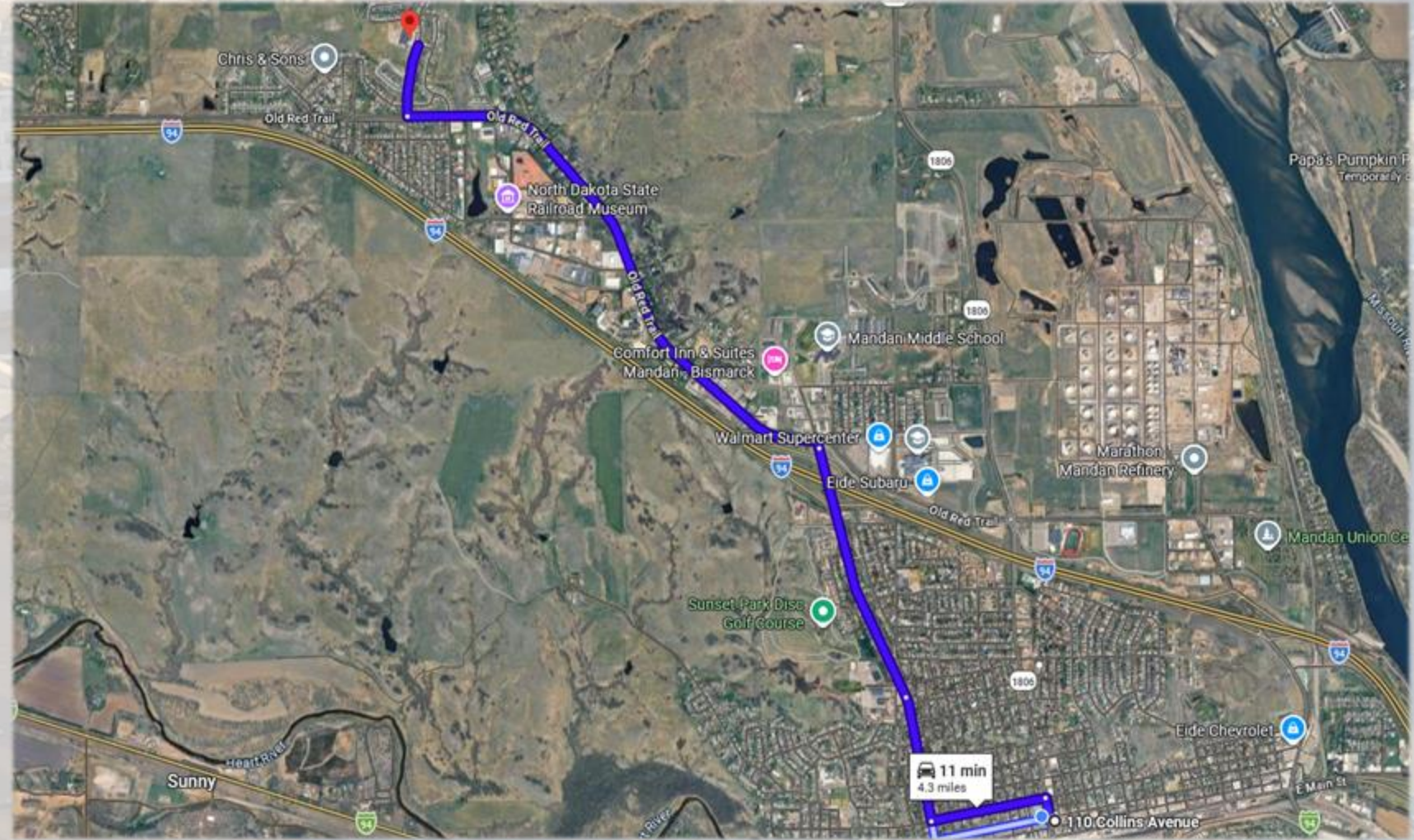
Fire station locations are designed to provide the most effective response coverage based on community development. Station 2 was built in 2009 to serve the rapidly growing Lakewood area and improve response times in southeast Mandan.

Coverage Goals

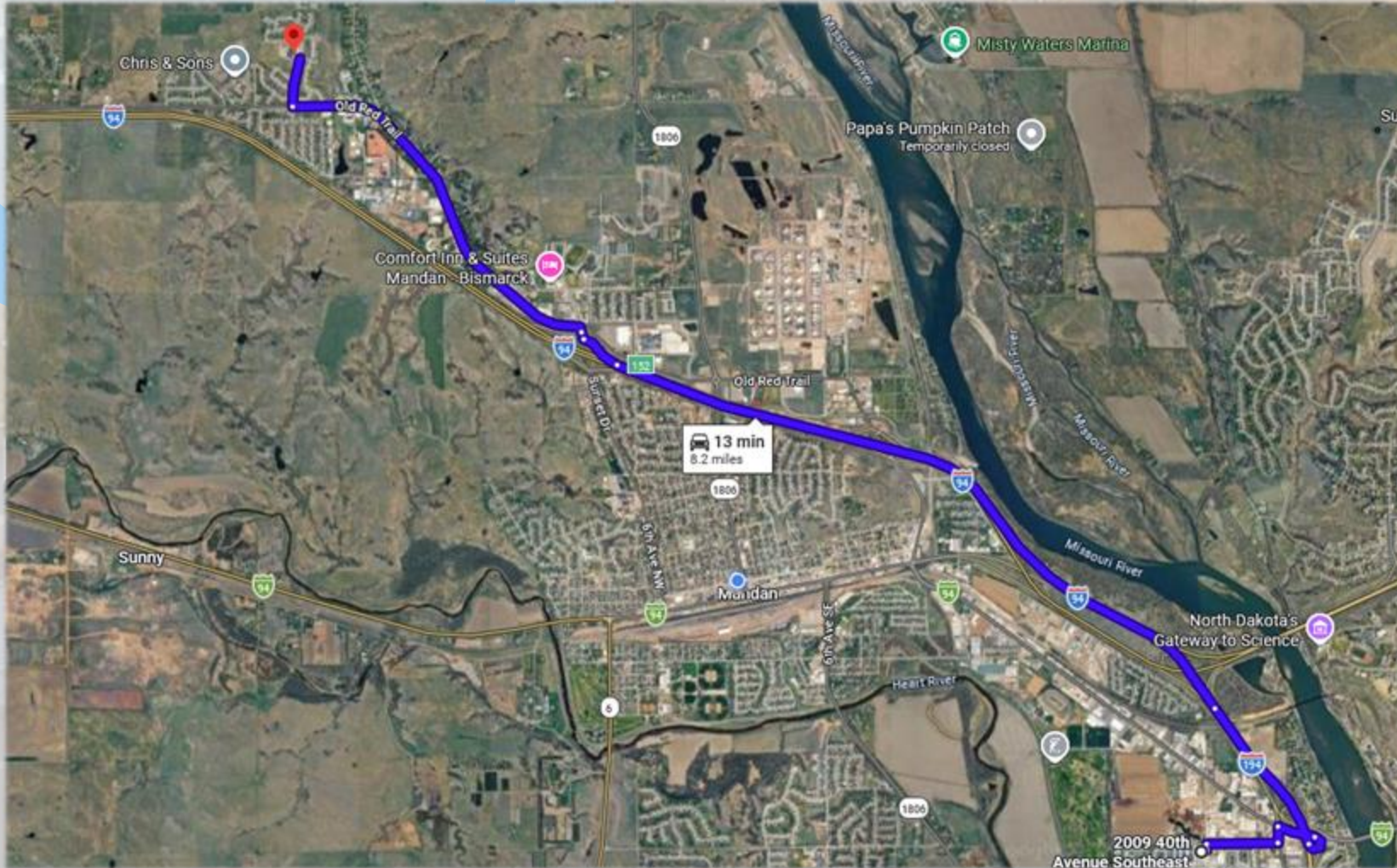
- Four-minute travel time to any incident 90% of the time (NFPA)
- 60 second turnout time
- Maintain approximately a 1.5-mile primary response area per station
- Full response force (17 firefighters) at incident within 8 minutes (NFPA)



**Response Time
to Red Trail
Elementary from
Station 1
(approximately 11 minutes)**



What Happens Today if Station 1 is Already on a Call?



**Response Time
to Red Trail
Elementary from
Station 2
(approximately 13 minutes)**

**Does
Response
Time Really
Matter?**



A Chain of Events

Every emergency follows a chain of events:

1. The emergency occurs
2. Someone discovers it and calls 911
3. Emergency crews are dispatched
4. First responders arrive and begin care or fire suppression

The faster firefighters and paramedics reach the scene, the greater the chance of **saving lives and preventing small incidents from becoming major disasters.**



Minutes Save Lives

When someone's heart stops, **brain damage begins in about 4 minutes** without CPR or defibrillation.

The faster emergency responders arrive, the greater the chance that person **walks out of the hospital instead of dying.**

Deadly Heat

During a structure fire, **temperatures can exceed 1,000°F within minutes**, quickly creating conditions that are deadly for occupants and extremely destructive to homes.



Fire Grows Fast

- A small fire can turn into a **fully involved room or structure in 5-10 minutes.**
- Fires **double in size** every single minute or less.
- **Escape time for occupants rapidly decreases.**

Faster response times **increase the chances of rescue and controlling the fire** before it spreads throughout the structure



The Solution: Fire Station 3

- Would significantly reduce response times to the Red Trail corridor and surrounding neighborhoods
- Would protect large commercial, industrial, and residential areas as well as critical infrastructure
- This location supports future development that is planned throughout NW Mandan



Mandan Sales Tax Today

8.25% (5% State, 1% County, 2.25% City)



Taxing Entity	Tax Rate	<u>Tax Per \$1 Spent</u>
State of North Dakota	5%	\$0.05
Morton County	1%	\$0.01
City of Mandan	2.25%	\$0.0225
Total Sales Tax	8.25%	\$0.0825

Taxing Entity	Tax Rate	<u>Tax Per \$100 Spent</u>
State of North Dakota	5%	\$5.00
Morton County	1%	\$1.00
City of Mandan	2.25%	\$2.25
Total Sales Tax	8.25%	\$8.25

***Bismarck City Sales Tax: 8.0%**

Will Your Taxes Go Up if the Measure Passes and Station 3 is Built?

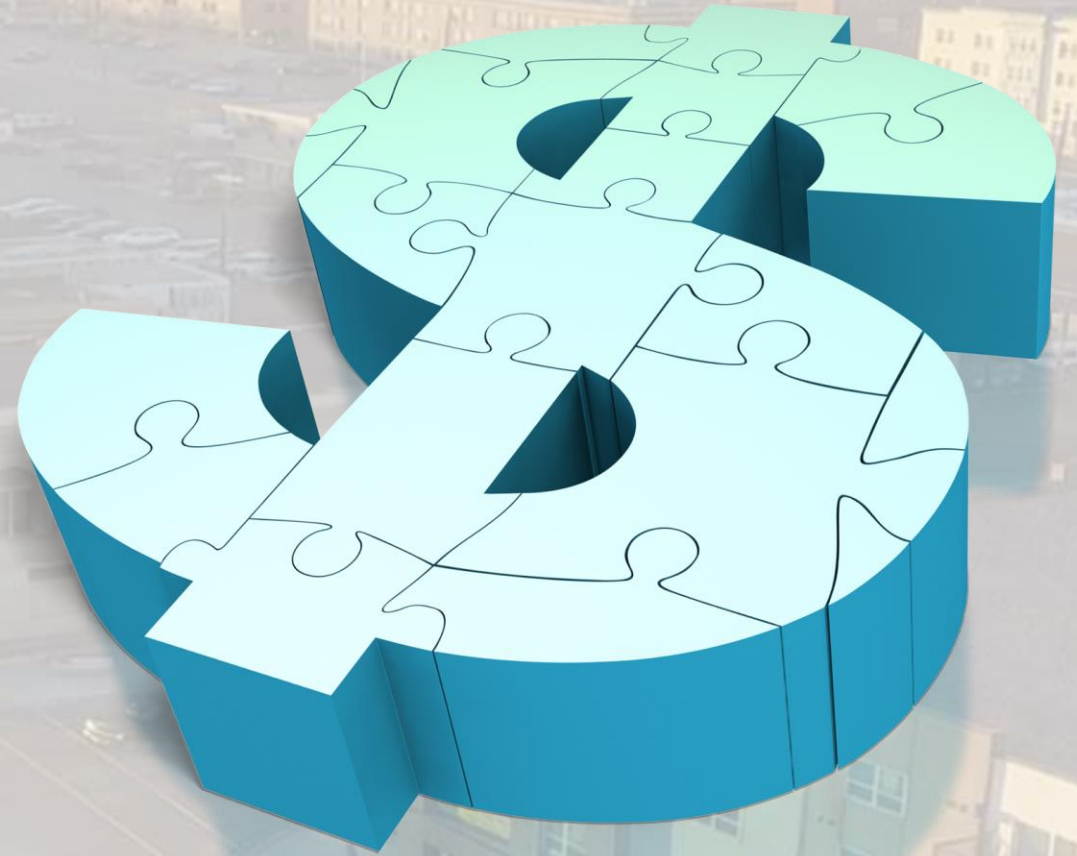
NO! This is NOT a new tax.

The proposal does not create a new tax.

It continues the existing 0.75% sales tax that is currently used to pay for the Starion Sports Complex.

That facility will be paid off 14 years early, allowing the same tax to be redirected to public safety infrastructure, including Fire Station 3.

Residents would not see an increase in the current sales tax rate.



Public Safety Investment Plan – Not to Exceed \$14 Million

Fire Station with Emergency Operations Center: \$9 Million

**Fire stations typically serve communities for 50 years or more.*

Fire Engine and Equipment for Station 3: \$2.5 Million

Planned Long-Term Facility Improvements: \$650K (2031/2036)

Future Growth Planning – Land for Station 4: \$250K (2034)

**Land acquisition for Station 4 is long-term growth planning only and does not represent construction of a new station.*

**All figures are preliminary planning estimates based on current construction and equipment costs.*





MANDAN
FIRE DEPARTMENT
STATION No. 3

Project Timeline



Alternative Options Considered

Grant Funding

The city and the fire department have and continue to pursue grant opportunities to support construction of a new fire station and EOC. To date, no viable grant programs have been identified that would fund or partially fund a project of this scope.

Working with Mandan Rural Fire

The Mandan Rural Fire Department is an all-volunteer department whose firefighters respond from their homes when calls are received. Their station, located near the proposed Station 3 site, is not staffed and does not have space to house additional apparatus. Because of the volunteer response model, the department is not able to provide consistent staffed coverage for city calls in northwest Mandan, although both departments continue to work very well together through mutual aid when needed.





Questions?

Thank You!

Thank you to the Mandan community for your continued support of the fire department. We do not ask often, but when we do, it is because it is important to maintaining the level of service and protection our community deserves.