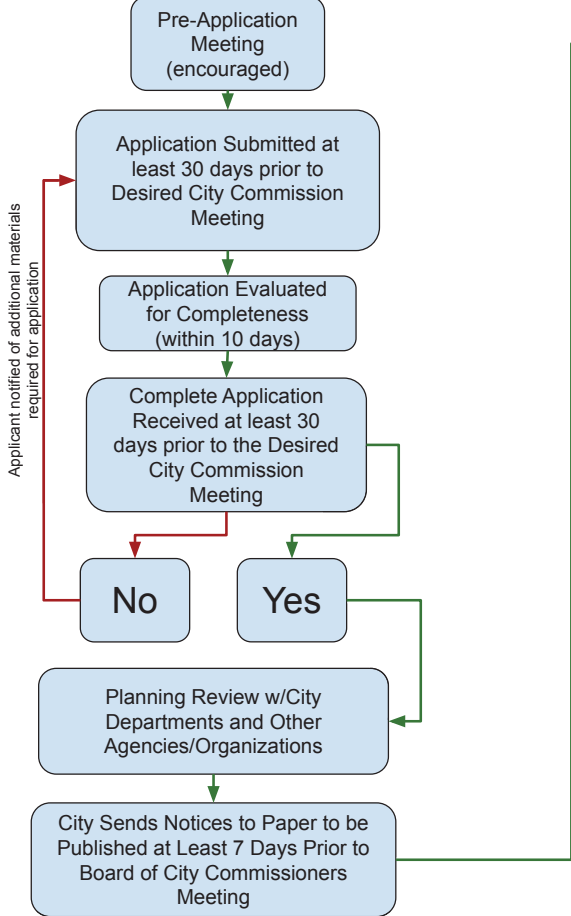
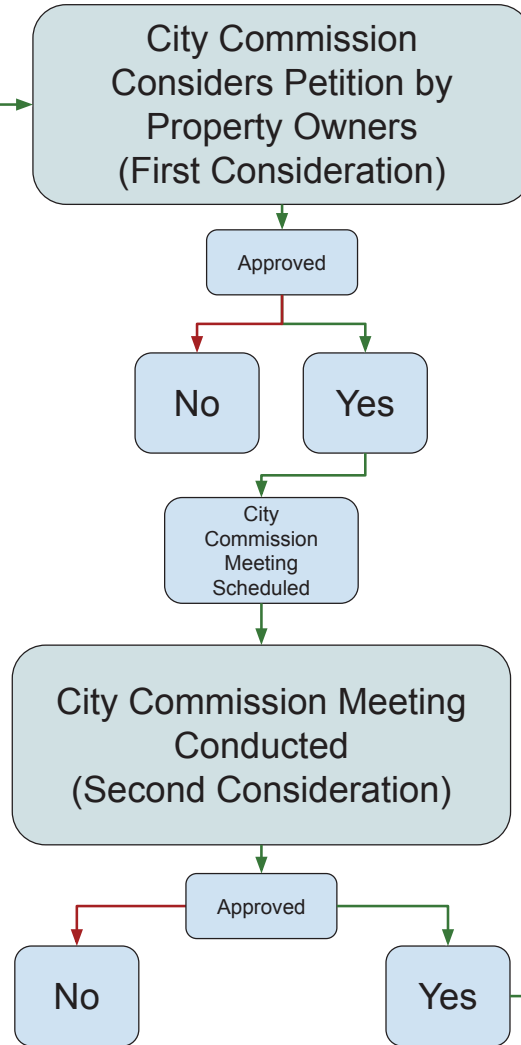


# Annexation

Average Time: 6-8 Weeks



## City of Mandan Land Use Application Process



City Commission - 1st and 3rd Tuesday of Each Month

Progression →

Delay →

For Additional Information Please Contact:

**Andrew Stromme**  
Principal Planner  
Office: 701-667-3248  
E-mail: Andrew.Stromme@CityofMandan.com

City Records Ordinance for Annexation



\*\*The procedure outlined in this document follows NDCC 40-51.2-03 related to when annexation is initiated by the owner of the subject property. This document does not outline the procedure related to when the City initiates an annexation.